

Trombone 2

# Enough Is Enough

Karine Polwart, Heather Macleod  
Marcus Britton, Oli Furness

♩ = 65

**INTRO**

1 2 3 4 5 6 7 8 9

10

**A1**

10 11 12 13 14 15 16 17

18

**A2**

18 19 20 21 22 23 24 25 26

27

**B ("breathe")** **B1** **B2**

27 28 29 30 31 32 33 34 35 36 37 38 39 40 41 42 43

44

**B3**

44 45 46 47 48 49 50

51

51 52 53 54 55

56

56 57 58 59 60 61

62

**C** ♩ = 119

62 63 64 65 66 67 68 69 70 71 72 73 74 75

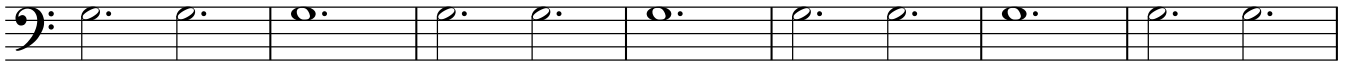
*pp cresc.*

76

76 77 78 79 80 81

Trombone 2

82 **D**

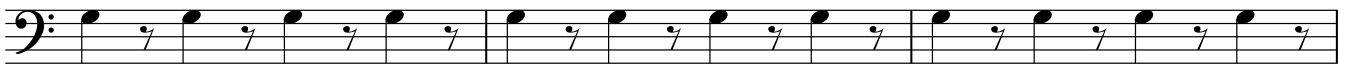


89



*mf cresc.*

93



96

**E**



100



103



106



109



112

**F**

14



129

**G**



132



Trombone 2

135

Measures 135-137: The staff begins with a half note G2 with a fermata. This is followed by eighth notes: G2, F2, E2, D2, C2, B1, A1, G1. The piece ends with three whole rests.

138

Measures 138-140: The staff starts with two whole rests. It then contains eighth notes: G2, F2, E2, D2, C2, B1, A1, G1. A half note G2 with a fermata follows, then eighth notes: G2, F2, E2, D2, C2, B1, A1, G1.

141

Measures 141-143: The staff begins with two whole rests. It then contains eighth notes: G2, F2, E2, D2, C2, B1, A1, G1. A half note G2 with a fermata follows, then eighth notes: G2, F2, E2, D2, C2, B1, A1, G1.

144

Measures 144-145: The staff contains eighth notes: G2, F2, E2, D2, C2, B1, A1, G1. A half note G2 with a fermata follows, then eighth notes: G2, F2, E2, D2, C2, B1, A1, G1.

146

Measures 146-148: The staff starts with a whole rest. It then contains two whole notes: G2 and F2, each with a fermata. The piece concludes with a double bar line and a long horizontal line below the staff.